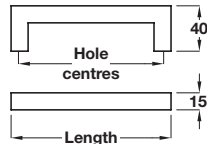


## HARGRAVE D handle

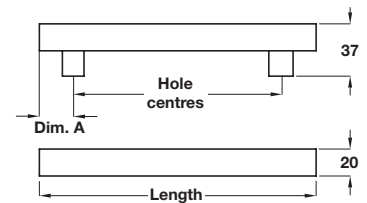


- > Order M4 handle screws separately
- > Brushed stainless steel
- > Order qty: 1 pc



Length	Hole centres	Cat. No.
141 mm	128 mm	100.46.001
173 mm	160 mm	100.46.002
205 mm	192 mm	100.46.003
269 mm	256 mm	100.46.004
333 mm	320 mm	100.46.005
461 mm	448 mm	100.46.006

## BARLEY bar handle, Ø 20 mm

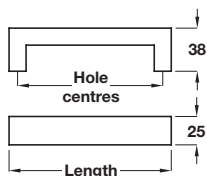
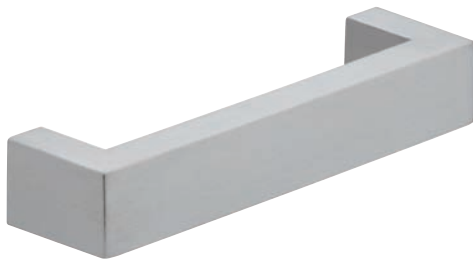


- > Order M4 handle screws separately
- > Stainless steel
- > Order qty: 1 pc



Length	Hole centres	Dim. A	Cat. No.
156 mm	96 mm	30 mm	107.64.001
188 mm	128 mm	30 mm	107.64.002
220 mm	160 mm	30 mm	107.64.003
252 mm	192 mm	30 mm	107.64.004
284 mm	224 mm	30 mm	107.64.005
344 mm	284 mm	30 mm	107.64.006
444 mm	384 mm	30 mm	107.64.008
544 mm	484 mm	30 mm	107.64.011
655 mm	595 mm	30 mm	107.64.013
Additional centre support			
706 mm	646 mm	30 mm	107.64.014
835 mm	775 mm	30 mm	107.64.015

## FENWICK D handle



- > Order M4 handle screws separately
- > Brushed stainless steel
- > Order qty: 1 pc



Length	Hole centres	Cat. No.
143 mm	128 mm	100.49.001
175 mm	160 mm	100.49.002
207 mm	192 mm	100.49.003
463 mm	448 mm	100.49.006

## DON'T FORGET

“ Remember to order your fixings, where screws are not included. ”



See page 277