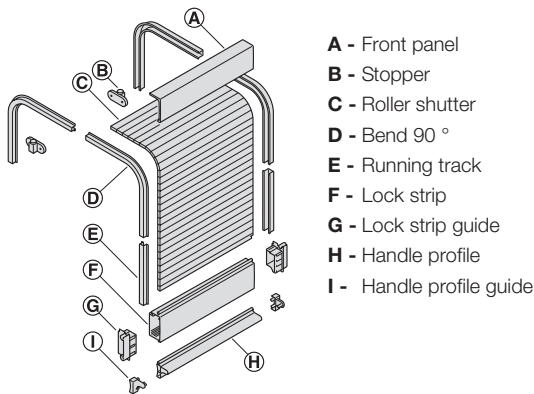


# TAMBOUR DOOR FITTINGS

Plastic fittings and tracks to create tambour doors. For cabinet door requirements where space is at a minimum. The door shutter folds away neatly and is concealed when open.

- > Vertical or horizontal running direction
- > For inset installation
- > Running track and bend for groove mounting
- > Optional with lock strip or handle profile



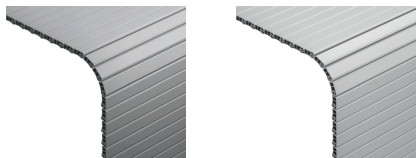
### For cabinet dimensions

Running direction	Internal cabinet height	Internal cabinet width
Vertical	Max. 1500 mm	Max. 900 mm
Horizontal	Max. 1200 mm	Max. 1600 mm



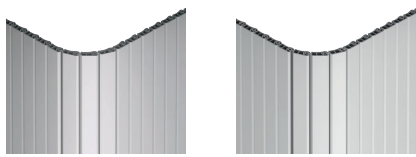
Risk of injury in case of vertical running direction (roller shutter falls down unbraked during closing). With larger cabinets, a counterbalancing mechanism must be used

### Roller shutter



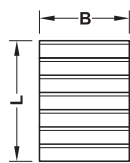
Grey - 442.07.120

Silver - 442.07.140



Grey - 442.07.121

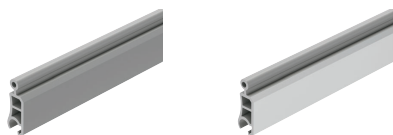
Silver - 442.07.141



- > Stabilised with cotton adhesive tape
- > Plastic
- > Order qty: 1 pc

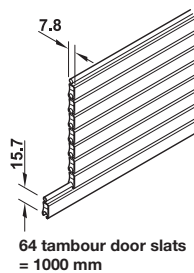
Width x Length	Grey	Silver coloured (aluminium effect)
800 x 1200 mm	442.07.120	442.07.140
1200 x 1620 mm	442.07.121	442.07.141

### Tambour door slats



Grey - 442.07.020

Silver - 442.07.040



- > For assembling roller shutters, for replacing tambour door slats
- > Plastic
- > Order qty: 1 pc

Length	Grey	Silver coloured (aluminium effect)
2300 mm	442.07.020	442.07.040