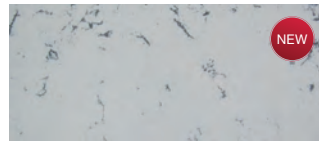


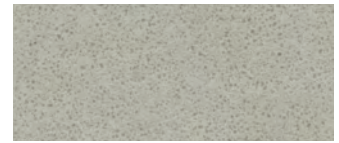
## APOLLO® QUARTZ 20MM

The look and feel of a natural stone surface. Apollo® Quartz is made from 93% quartz and 7% polymer resin. This product offers enhanced colours, mirror flecks, metallic and modern concrete options.

- > 16 standard colours
- > Apollo® Quartz is an engineered stone made from 93% quartz crystals and polymer resin
- > Quartz worktops are a popular choice for today's kitchen being a durable, designer friendly option when remodelling a kitchen
- > The selection of colours includes a number of vibrant hues not available in natural materials such as granite
- > Polished or matt finished, edges are finished on one long and both short sides for worktops, two long and one short side for breakfast bars and all sides for islands
- > Some finishes have random veining - however base colour remains consistent between scants (from same batch) please ask for a photo of slab, joints may highlight variations
- > Apollo® Quartz worktops do not need polishing or sealing
- > Apollo® Quartz worktops are uniform in colour and pattern
- > Non-porous, naturally resistant to mould, bacteria and mildew
- > Stain and heat resistant
- > Option of integrated stainless steel sinks
- > Tested to FIRA Industry Standards
- > 10 Year limited manufacturer's warranty
- > Prices include delivery to a UK mainland trade address



+Lyskam white (Price group 3)



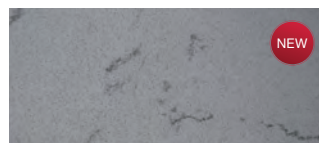
Oyster grey matt finished (Price group 2)



+Lyskam beige (Price group 3)



Titanium (Price group 2)



+Lyskam grey (Price group 3)

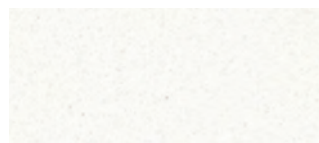


Iridium (Price group 2)

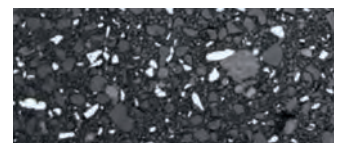
+ Man made product has horizontal veining, however base colour remains consistent between slabs (from the same batch and requires mitre joint on corners, incurring additional cost)



Mezzanine grey (Price group 2)



Chiffon white matt finished (Price group 2)



Tungsten (Price group 2)



Argyle mist (Price group 2)



Cocoa (Price group 2)



Steel (Price group 2)



Carbon black (Price group 1)



Chromium (Price group 2)



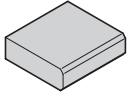
Astro black (Price group 2)



Praline (Price group 2)

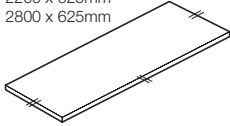
**Apollo® Quartz worktops, splashbacks, upstands and sinks**

**Double bevel**



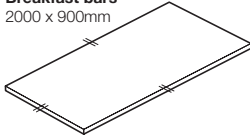
**Worktops**

1040 x 625mm  
2200 x 625mm  
2800 x 625mm



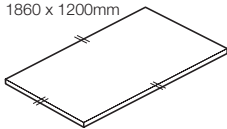
**Breakfast bars**

2000 x 900mm



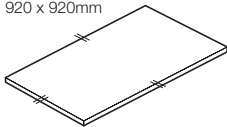
**Island units**

1860 x 1200mm



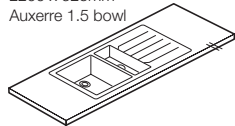
**Internal corners**

920 x 920mm

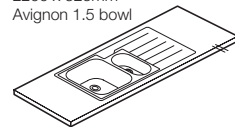


**2.2 m sink modules  
Stainless steel**

2200 x 625mm  
Auxerre 1.5 bowl



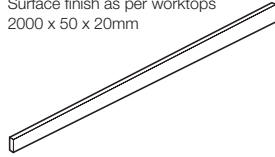
2200 x 625mm  
Avignon 1.5 bowl



Illustrations show left hand bowl sinks

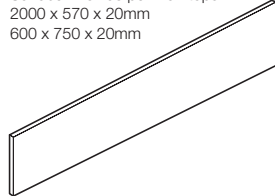
**Upstands**

Solid acrylic sheet with profiled top edge  
Surface finish as per worktops  
2000 x 50 x 20mm



**Splashbacks**

Solid acrylic sheet with profiled top edge  
Surface finish as per worktops  
2000 x 570 x 20mm  
600 x 750 x 20mm



**Measuring up:**

- > Apollo® Quartz solid surface can expand as much as 1 mm/mtr. Always allow a gap of at least 3 mm if for example, worktops are captive between walls
- > Tolerance is ±2 mm
- > Splashbacks and upstands over 100 mm high must have a minimum gap from the face to the rear of the hob - electric 50 mm, gas 100 mm
- > Allow a minimum 50 mm from the cut-out to the front and back edges, 50 mm from the back edge and 120 mm between two hob cut-outs
- > Wherever possible, joints in worktops should fall on a carcass end panel, giving added support to a joint
- > Joints should be a minimum of 100 mm from the sink or 120 mm from a hob cut-out
- > Allow a minimum of 70 mm between sink cut outs
- > Stainless steel sink cut outs to manufacturer's recommendations
- > Overhangs in excess of 300 mm should be supported and the worktop should be supported every 600 mm
- > Wherever possible, joints in worktops should fall on a carcass end panel not in the middle, this gives added support to a joint

**Hot stuff:**

- > Heat producing appliances that sit beneath the worktop, must have an aluminium foil membrane placed on the underside of worktop, directly above the appliance
- > Ensure that pans used on gas hobs are of the correct size
- > Hob flanges must sit on aluminium thermal insulation around the cut-out, to avoid conducting excess heat and causing cracks in the worktop
- > Never place hot pans or cooking equipment directly onto the work surface (or into an empty sink). Always use a heat protection pad or a trivet with rubber feet for hot cook wear
- > Flush mounted, recessed hobs (including induction hobs) are not covered under warranty

**Installation:**

- > Plastering or tiling should be completed after installation
- > Installation is relatively easy, for either a competent DIY enthusiast or recognised kitchen installer to carry out
- > Important note: Any modifications to the Quartz modular product should be undertaken by an experienced fitter
- > Plan the worktop layout to ensure joints don't fall on or within 100 mm of cut-outs
- > Drainer grooves and recessed drainers may have a slightly duller appearance than the worktop
- > Easy to follow installation video is available to download at [www.hafele.co.uk](http://www.hafele.co.uk)

**Care and maintenance:**

- > Always use a chopping board; the surface is scratch resistant not scratch proof
- > Care should always be taken to protect work surface from sharp or heavy items
- > Care should be taken with exposed edges as if caught accidentally chipping can occur



- > Engineered stone is manufactured in batch processes and as the raw material is natural quartz, variations in tone, size, shape and pattern of the stone may occur between slabs and certainly between batches. Some colours have different levels of pigmentation and/or particle distribution. This may lead to variation in the appearance of the worktop and is not a product fault
- > Plain colours are prone to contamination (e.g. light colours show small dark spots while darker colours may appear patchy with lighter spots) and occasional contrasting coloured stone chips can be expected in material of natural origin; these are not defects in the material
- > Apollo® Quartz is vibrated to remove air trapped during manufacture and it is common to find very small air holes in the surface of all colours, these are inherent in the manufacturing process of engineered stone and are not considered as product faults  
This process is industry standard and does not affect your warranty

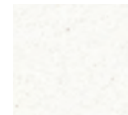


Lyskam white finish island unit

## Apollo® Quartz worktops, splashbacks, upstands and worktops with integrated sinks



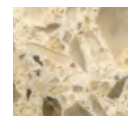
\*Please state handing when ordering worktops with integrated stainless steel 1.5 bowl sinks



Item	Lyskam white	Lyskam beige	Lyskam grey	Chiffon white (matt)
Worktop 1040 x 625 x 20 mm	562.70.978	562.70.985	562.70.992	562.70.560
Worktop 2200 x 625 x 20 mm	562.70.979	562.70.986	562.70.993	562.70.561
Worktop 2800 x 625 x 20 mm	562.70.980	562.70.987	562.70.994	562.70.562
Breakfast bar 2000 x 900 x 34 mm	562.70.983	562.70.990	562.70.997	562.70.565
Island unit 1860 x 1200 x 20 mm	562.70.984	562.70.991	562.70.998	562.70.566
Worktop 2200 x 625 x 20 mm with 1.5 bowl Avignon sink*	562.70.981	562.70.988	562.70.995	562.70.563
Worktop 2200 x 625 x 20 mm with 1.5 bowl Auxerre sink*	562.70.982	562.70.989	562.70.996	562.70.564
Upstand 2000 x 50(H) x 20 mm	562.71.624	562.71.625	562.71.626	562.71.549
Full splashback 2000 x 570(H) x 20 mm	562.71.182	562.71.184	562.71.186	562.71.081
Half splashback 600 x 750(H) x 20 mm	562.71.181	562.71.183	562.71.185	562.71.080



\*Please state handing when ordering worktops with integrated stainless steel 1.5 bowl sinks



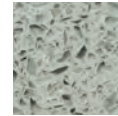
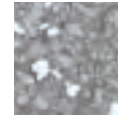
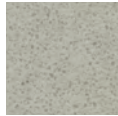
Item	Argyle mist	Steel	Chromium	Praline
Worktop 1040 x 625 x 20 mm	562.70.616	562.70.574	562.70.658	562.70.588
Worktop 2200 x 625 x 20 mm	562.70.617	562.70.575	562.70.659	562.70.589
Worktop 2800 x 625 x 20 mm	562.70.618	562.70.576	562.70.660	562.70.590
Breakfast bar 2000 x 900 x 34 mm	562.70.621	562.70.579	562.70.663	562.70.593
Island unit 1860 x 1200 x 20 mm	562.70.622	562.70.580	562.70.664	562.70.594
Worktop 2200 x 625 x 20 mm with 1.5 bowl Avignon sink*	562.70.619	562.70.577	562.70.661	562.70.591
Worktop 2200 x 625 x 20 mm with 1.5 bowl Auxerre sink*	562.70.620	562.70.578	562.70.662	562.70.592
Upstand 2000 x 50(H) x 20 mm	562.71.553	562.71.550	562.71.556	562.71.551
Full splashback 2000 x 570(H) x 20 mm	562.71.089	562.71.083	562.71.095	562.71.085
Half splashback 600 x 750(H) x 20 mm	562.71.088	562.71.082	562.71.094	562.71.084

YOU ALSO NEED:





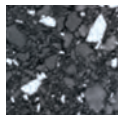
\*Please state handing when ordering worktops with integrated stainless steel 1.5 bowl sinks



Item	Oyster grey (matt)	Titanium	Iridium	Mezzanine grey
Worktop 1040 x 625 x 20 mm	562.70.728	562.70.630	562.70.602	562.70.686
Worktop 2200 x 625 x 20 mm	562.70.729	562.70.631	562.70.603	562.70.687
Worktop 2800 x 625 x 20 mm	562.70.730	562.70.632	562.70.604	562.70.688
Breakfast bar 2000 x 900 x 34 mm	562.70.733	562.70.635	562.70.607	562.70.691
Island unit 1860 x 1200 x 20 mm	562.70.734	562.70.636	562.70.608	562.70.692
Worktop 2200 x 625 x 20 mm with 1.5 bowl Avignon sink*	562.70.731	562.70.633	562.70.605	562.70.689
Worktop 2200 x 625 x 20 mm with 1.5 bowl Auxerre sink*	562.70.732	562.70.634	562.70.606	562.70.690
Upstand 2000 x 50(H) x 20 mm	562.71.561	562.71.554	562.71.552	562.71.558
Full splashback 2000 x 570(H) x 20 mm	562.71.105	562.71.091	562.71.087	562.71.099
Half splashback 600 x 750(H) x 20 mm	562.71.104	562.71.090	562.71.086	562.71.098



\*Please state handing when ordering worktops with integrated stainless steel 1.5 bowl sinks



Item	Tungsten	Cocoa	Carbon black	Astro black
Worktop 1040 x 625 x 20 mm	562.70.700	562.70.532	562.70.518	562.70.546
Worktop 2200 x 625 x 20 mm	562.70.701	562.70.533	562.70.519	562.70.547
Worktop 2800 x 625 x 20 mm	562.70.702	562.70.534	562.70.520	562.70.548
Breakfast bar 2000 x 900 x 34 mm	562.70.705	562.70.537	562.70.523	562.70.551
Island unit 1860 x 1200 x 20 mm	562.70.706	562.70.538	562.70.524	562.70.552
Worktop 2200 x 625 x 20 mm with 1.5 bowl Avignon sink*	562.70.703	562.70.535	562.70.521	562.70.549
Worktop 2200 x 625 x 20 mm with 1.5 bowl Auxerre sink*	562.70.704	562.70.536	562.70.522	562.70.550
Upstand 2000 x 50(H) x 20 mm	562.71.559	562.71.547	562.71.546	562.71.548
Full splashback 2000 x 570(H) x 20 mm	562.71.101	562.71.077	562.71.075	562.71.079
Half splashback 600 x 750(H) x 20 mm	562.71.100	562.71.076	562.71.074	562.71.078

**YOU ALSO NEED:**

**CARE KIT**  
Shown below

**OPTIONAL ACCESSORIES**  
Pages 213-218

**Apollo® Quartz Installation and care set**

- > Set includes:  
2x Aluminium foil sheets, 1x Roll aluminium tape, 1x Fixings pack (12x brackets, 48x screws and washers), 2x Alcohol wipe pack, 1x Care and maintenance guide, 1x Mark and stain eraser, 1x 500 ml Antibac Work surface Cleaner - Stone Guard, 1x Pair of disposable gloves, 1x Microfibre cloth, 1x Instruction leaflet
- > Order qty: 1 set

Type of finish	Gloss	Matt
Cat. No.	562.71.993	562.71.994

- > Caring for Apollo® Quartz:  
Matt Stone Paste is formulated for deep cleansing and restoration of matt quartz surfaces (matt surfaces only)
- > Everyday cleaning (polished and matt surfaces)  
Polished quartz must not be rubbed with abrasive materials  
For raised, persistent marks wash using a white, non-abrasive pad
- > Persistent stains (matt surfaces only)  
First try the Stone Guard and allow a longer contact time  
If not removed with regular cleaning use a wet white abrasive pad with a little matt Stone Paste. Apply, with plenty of water, in a large circular motion and the whole top is cleaned at the same time. Rinse well with hot soapy water and dry with a clean tea towel or cloth as above