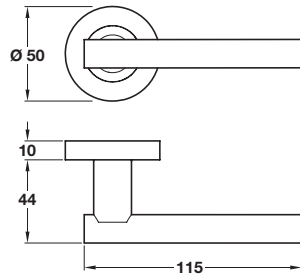
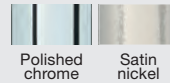


## VARTHEN lever handles on rose, zinc alloy



Note: ±3 mm tolerance on dimensions

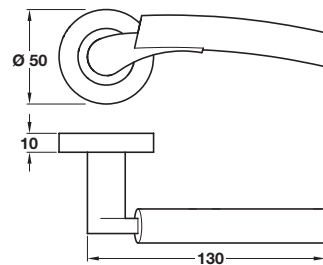
- > Pair of lever handles on rose
- > Designed for interior doors
- > Grub screw fixing on 8 mm square split spindle
- > Sprung, for use with standard duty followers
- > To suit doors 35-44 mm thick
- > Zinc alloy
- > Order qty: 1 pair



Finish	Cat. No.
Polished chrome	900.20.062
Satin nickel	900.20.066



## ARKLES lever handles on rose, zinc alloy



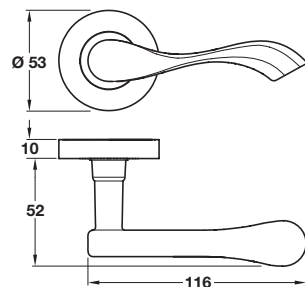
Note: ±3 mm tolerance on dimensions

- > Pair of lever handles on round rose
- > Designed for interior doors
- > Grub screw fixing on 8 mm square split spindle
- > Sprung, for use with standard duty followers
- > To suit doors 35-44 mm thick
- > Zinc alloy
- > Order qty: 1 pair

Finish	Cat. No.
Polished chrome/Satin nickel	900.20.242



## WELFORD lever handles on rose, zinc alloy



Note: ±3 mm tolerance on dimensions

- > Pair of lever handles on rose
- > Designed for interior doors
- > Grub screw fixing on 8 mm square split spindle
- > Sprung, for use with standard duty followers
- > To suit doors up to 35 mm thick
- > Zinc alloy
- > Order qty: 1 pair



Finish	Cat. No.
Polished chrome	900.21.182
Satin nickel	900.21.186



- > Co-ordinating escutcheons and WC/emergency release also available see page 72
- > Co-ordinating levers on back plates are shown on pages 95-97