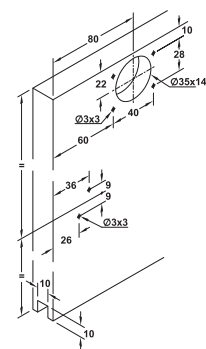
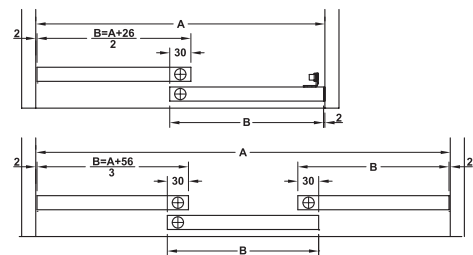
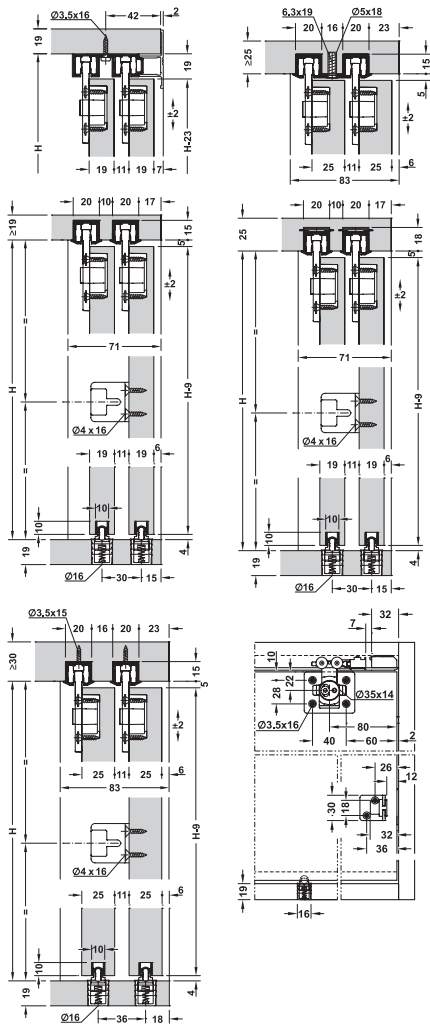



# EKU CLIPO 26/36 H IF SLIDING DOOR SYSTEMS

Quality furniture where bi-passing sliding doors are required. Recess mounted back fixing housings (Clipo 36 H)

- > EKU Clipo 26 H IF, 2 rollers
- > EKU Clipo 36 H IF, 4 rollers
- > Range:
  - Max. door weight **26/36 kg**
  - Door thickness **19-25 mm**
  - Max. door height **2200 mm**
  - Max. door width **1000 mm**
- > Running gear guided by friction bearing mounting plastic roller
- > Height adjustment  $\pm 2$  mm
- > Spring loaded rattle proof bottom guide
- > EKU soft close mechanism can be ordered separately, information on request

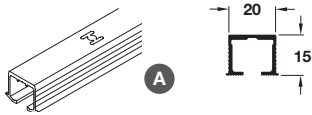


 > Track, guide profile and fitting sets must be ordered separately, shown on page 45

Sliding Door Fittings for Furniture: Sliding Cabinet Door

10

## EKU-CLIPO 26/36 top track

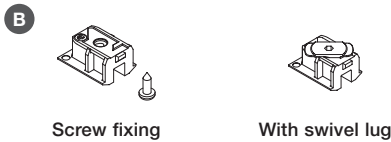


- > Single top track with screw holes for soffit fixing
- > For min. 30 mm thick upper carcass
- > Bright aluminium
- > Order qty: 1 pc



Length	2.5 m	3.5 m
A Single top track	405.00.622	405.00.623

## EKU-CLIPO 26/36 top track end piece

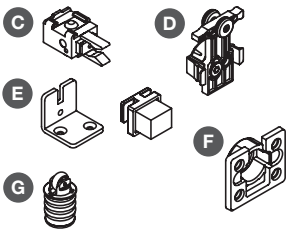


- > To support ends of track
- > Order 4 pcs per 2 or 3 door application
- > Grey plastic
- > Order qty: 1 pc

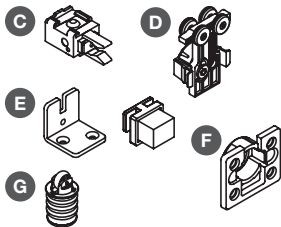
Item B	Cat. No.
Screw fixing	405.00.072
With swivel lug	405.00.073

## EKU-CLIPO 26/36 H fitting sets

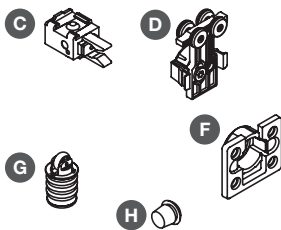
### EKU-CLIPO 26 H, 2 doors



### EKU-CLIPO 36 H, 2 doors



### EKU-CLIPO 36 H, 3 doors



- > Fitting sets include:
  - C Track stopper, with retaining spring, grey plastic
  - D Running gear, clip fixing or groove mounting, with  $\pm 2$  mm vertical adjustment, bright zinc alloy
  - E Suspension fitting, clip fixing, for use with boss-type housing F, bright zinc alloy
  - F Housing, boss-type screw fixing, for use with suspension fitting E anthracite plastic
  - G Bottom roller, guide spring loaded, for mounting in drilled holes, grey plastic
  - H Rubber buffer, for  $\varnothing 6$  mm hole, plug-fit, black rubber
- > Order qty: 1 set



Fitting set	26 H, back fitting		36 H, back fitting	
	For 2 doors	For 2 doors	For 2 doors	For 3 doors
C Track stopper	4 pcs	4 pcs	4 pcs	4 pcs
D Running gear	4 pcs	4 pcs	4 pcs	6 pcs
E Suspension fitting	1 pc	4 pcs	4 pcs	-
F Housing, boss-type	4 pcs	4 pcs	4 pcs	6 pcs
G Bottom roller guide	2 pcs	2 pcs	2 pcs	3 pcs
H Rubber buffer	-	-	-	2 pcs
Cat. No.	405.00.004	405.02.404	405.02.404	405.02.405
Additional items available to order (order qty: 1 pc) Cat. No.				
C Track stopper				405.00.050
G Bottom roller guide				405.04.040

- > Depending on door weight, EKU soft close mechanism can be ordered separately, information on request

## EKU-CLIPO 26/36 bottom guide profile



- > For glue mounting
- > Bright aluminium
- > Order qty: 1 pc

Length	2.5 m	3.5 m
I Bottom guide profile	405.04.251	405.04.351