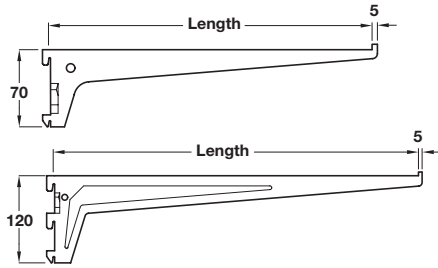
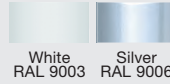


Bracket, two/three hooks



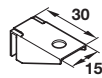
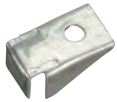
- > Max. load carrying capacity 55 kg or 65 kg per bracket*
- > With lug to secure shelf in drill hole
- > For use with single slotted channels or columns
- > Brackets hook straight into columns
- > Plastic coated steel
- > Order qty: 1 pc



Length	Thickness	White (RAL 9003)	Silver coloured (RAL 9006)
Max. load carrying capacity 55 kg, with 2 hooks			
150 mm	2.0 mm	772.60.515	-
200 mm	2.0 mm	772.60.520	-
250 mm	2.5 mm	772.60.525	-
300 mm	2.5 mm	772.60.530	770.60.530
350 mm	2.5 mm	772.60.535	770.60.535
400 mm	2.5 mm	772.60.540	770.60.540
Max. load carrying capacity 65 kg, with 3 hooks			
500 mm	2.5 mm	772.64.550	770.64.550
600 mm	2.5 mm	772.64.560	770.64.560

! *The load bearing capacity shown only applies with evenly distributed loads

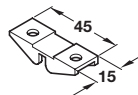
Single sided shelf support



- > For clipping onto bracket shown above
- > To allow a shelf to end flush with the supporting channel
- > With drill hole for screw fixing to wooden shelves or inserting suction pad 772.22.005
- > Stainless steel
- > Order qty: 1 pack (12 pcs per pack)

	Cat. No.
Shelf support	772.20.056

Double sided shelf support



- > To allow two shelves to be butted together on one bracket
- > For clipping onto bracket shown above
- > With drill holes for screw fixing to wooden shelves or inserting suction pad 772.22.005
- > Stainless steel
- > Order qty: 1 pack (12 pcs per pack)

	Cat. No.
Shelf support	772.20.065