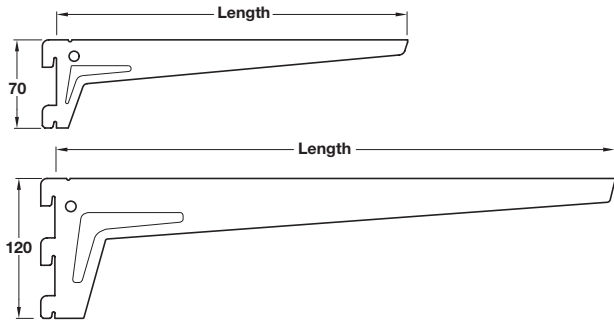
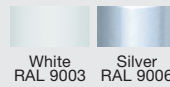


Flange bracket, two/three hooks



- > Max. load carrying capacity 55 kg or 65 kg per bracket*
- > With screw holes for securing shelf
- > Can also be used for glass shelves in combination with suction pad 772.22.005
- > For use with single-slotted supporting channel or columns
- > Brackets hook straight into columns
- > Plastic coated steel
- > Order qty: 1 pair



| Length | Thickness | White (RAL 9003) | Silver coloured (RAL 9006) |
|--|-----------|---------------------|-------------------------------|
| Max. load carrying capacity 55 kg, with 2 hooks | | | |
| 180 mm | 2.0 mm | 772.68.518 | - |
| 230 mm | 2.0 mm | 772.68.523 | - |
| 280 mm | 2.0 mm | 772.68.528 | 770.68.528 |
| 330 mm | 2.5 mm | 772.68.533 | - |
| 380 mm | 2.5 mm | 772.68.538 | - |
| Max. load carrying capacity 65 kg, with 3 hooks | | | |
| 480 mm | 2.5 mm | 772.69.548 | 770.69.548 |



*The load bearing capacity shown only applies with evenly distributed loads

Suction pad

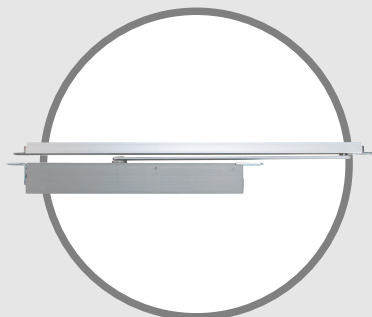


772.22.005 REPLACED BY
772.22.050

- > For mounting glass shelves
- > For use with brackets, double brackets and clip on supports
- > Plastic
- > Order qty: Multiples of 100 pcs

| Finish | Cat. No. |
|-------------|------------|
| Transparent | 772.22.050 |

RELATED PRODUCTS



Geze boxer single action concealed overhead door closer

German efficiency in door controls.

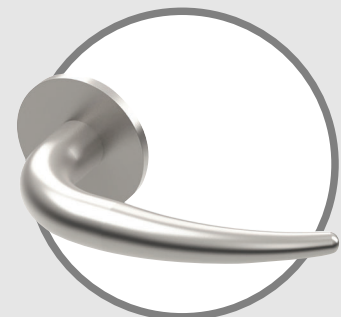
- > Product shown is **931.17.903**
- > For full details see **Section 4** page **29**



Häfele stainless steel ball bearing butt hinge, 102 x 76 mm

High quality grade 304 stainless steel hinge, tested to BSEN 1935.

- > Product shown is **926.90.203**
- > For full details see **Section 3** page **18**



Tusk lever handles, grade 316 stainless steel

Sophisticated in design, this lever handle is manufactured in grade 316 stainless steel.

- > Product shown is **902.21.620**
- > For full details see **Section 1** page **6**