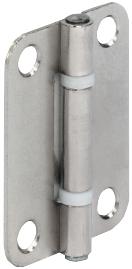


## ACCESSORIES FOR FOLDING INTERIOR DOORS

This is a selection of fittings and accessories to complement your sliding door gear project, for full specification details on these products, please visit [www.hafele.co.uk](http://www.hafele.co.uk).

### Steel folding door hinge



- > Length x width: 40 x 29 mm
- > Very light duty applications only
- > For panel to panel joint
- > Plastic bearings ensure smooth and silent use
- > Steel
- > Order qty: 1 pc



Finish	Cat. No.
Polished nickel-plated	354.14.709

### Phoenix stainless steel washered butt hinge

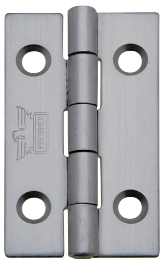


- > Length x width: 102 x 73 mm
- > Staggered hole pattern
- > Maximum adjusted door weight 60 kg
- > Minimum door thickness 35 mm
- > Square corners
- > Five knuckle hinge, double washered
- > Grade 304 stainless steel
- > Order qty: 1 pc



Finish	Cat. No.
Satin stainless steel	921.08.122

### Stainless steel butt hinge

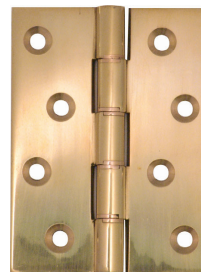


- > Length x width: 62 x 38 mm
- > Grade 4 corrosion resistance
- > Max. adj. door weight 10 kg
- > Unwasherred, with stainless steel fixed spun pin
- > Stainless steel
- > Order qty: 1 pc



Finish	Cat. No.
Satin stainless steel	921.08.100
Polished stainless steel	926.91.031

### Brass DPBW butt hinge

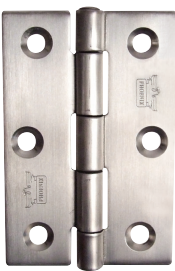


- > Length x width: 102 x 75 mm
- > Double phosphor bronze washers
- > Brass pin
- > Max. adjusted door weight 60 kg
- > Brass
- > Order qty: 1 pc



Finish	Cat. No.
Polished brass	926.90.118

### Stainless steel butt hinge



- > Length x width: 76 x 50 mm
- > Grade 4 corrosion resistance
- > Maximum adjusted door weight 20 kg
- > Square corners
- > Unwasherred, with stainless steel fixed spun pin
- > Stainless steel
- > Order qty: 1 pc



Finish	Cat. No.
Satin stainless steel	921.08.104
Polished stainless steel	926.91.061

### Brass DPBW butt hinge



- > Length x width: 100 x 75 mm
- > Double phosphor bronze washers
- > Brass pin
- > Max. adjusted door weight 60 kg
- > Brass
- > Order qty: 1 pc



Finish	Cat. No.
Polished brass	921.08.042

### Steel flush hinge



- > Length: 60 mm
- > For inset doors
- > With fixed pin
- > Non mortise
- > Steel
- > Order qty: 1 pc



Finish	Cat. No.
Zinc-plated	351.95.950

### StarTec Concealed mortise 3D hinges



- > Length 111.5 mm
- > For wooden frames, for flush wooden interior doors
- > Opening angle 180°
- > Matt nickel-plated zinc alloy
- > Order qty: 1 pc



Hand	Cat. No.
Left	927.32.006
Right	927.32.016