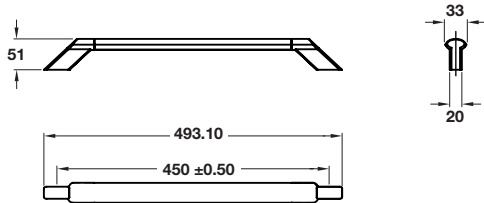


Entry handle



- > Brushed nickel or chrome gloss end caps/Dark brown artificial leather
- > Order qty: 1 pc



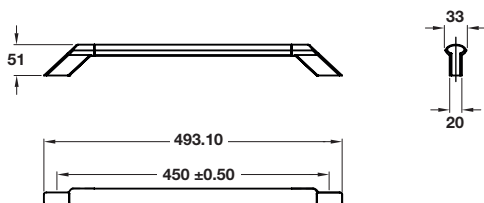
Finish	Cat. No.
Brushed nickel plated	901.04.060
Chrome gloss	901.04.061

Entry handle, with LED light



- > Beam angle: 120°
- > Controlled by on/off switch
- > Heat resistant to 130°C
- > Voltage: 12V. Wattage: See table below
- > Brushed nickel or chrome gloss end caps/dark brown artificial leather
- > Order qty: 1 pc

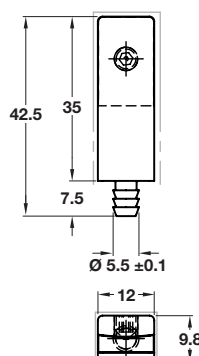
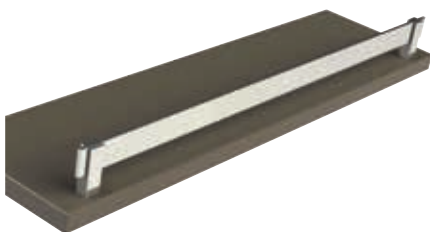
Output:	3200 K	5200 K
Light colour:	Warm white	Cool white
Wattage (W):	1	1
Number of diodes:	12	12
Light output (Lm):	110	110
Colour Rendering Index:	80	80



IP20

Finish	Light temperature	Cat. No.
Brushed nickel plated	5200 K	901.04.062
Chrome gloss	3200 K	901.04.063

Straight rail handle system



- > Base has push fit installation
- > M5 grub screw to secure rail into place
- > H x D x L: 20 x 3 x 3000 mm
- > Chrome gloss plated zinc alloy
- > Order base and profile separately
- > Order qty: 1 pc

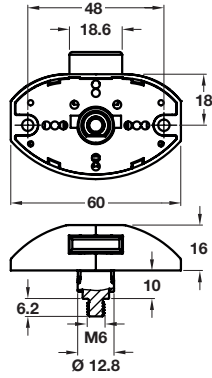


	Cat. No.
Base	833.72.797
Profile	833.72.785

Push lock evolution



- > Grey plastic
- > Order qty: 1 pc



	Cat. No.
Push lock	211.60.202

Push lock evolution cover



- > Grey plastic
- > Order qty: 1 pc



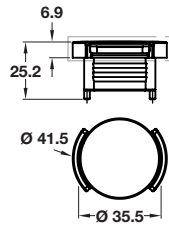
Photo shows Push lock with cover

	Cat. No.
Cover	211.60.207

Round functional push knob



- > For use with Push Lock Evolution shown above, 211.60.202
- > Material: Zinc alloy
- > Order qty: 1 pc

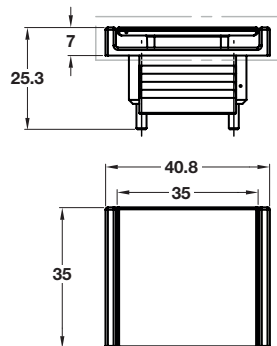


Finish	Cat. No.
Chrome gloss	229.01.660
Chrome matt	211.60.760

Square functional push knob



- > For use with Push Lock Evolution shown above, 211.60.202
- > Material: Zinc alloy
- > Order qty: 1 pc

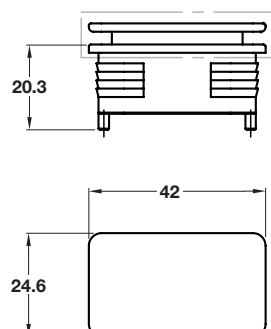


Finish	Cat. No.
Chrome gloss	229.01.662
Chrome matt	211.60.762

Rectangle functional push knob



- > For use with Push Lock Evolution shown above, 211.60.202
- > Material: Zinc alloy
- > Order qty: 1 pc

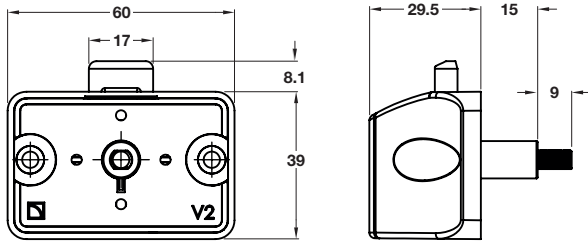


Finish	Cat. No.
Chrome gloss	229.01.661
Chrome matt	211.60.761

Push lock "Push In Plus" V1



- > With M6 threaded pin
- > Standard version for 16 mm panels
- > Plastic
- > Order qty: 1 pc

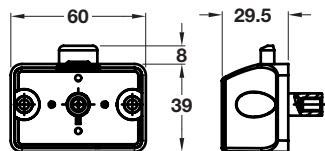


Finish	Cat. No.
Grey	211.60.200

Push lock "Push In Plus" V2

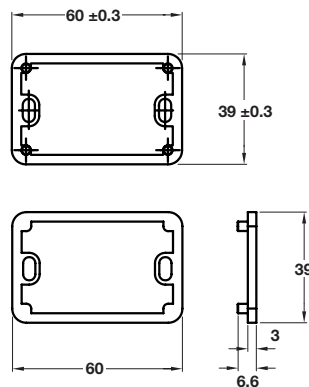


- > With M6 threaded pin
- > Standard version for 16 mm panels
- > Plastic
- > Order qty: 1 pc



Finish	Cat. No.
Grey	211.60.201

Push lock frame for Push In Plus



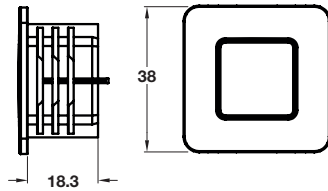
- > For use with Push In Plus locks shown above
- > ABS
- > Order qty: 1 pc

Assembly frame	For panel	Cat. No.
1 mm	15 mm	211.60.208
3 mm	13 mm	211.60.209

Push knobs



- > Plastic
- > Order qty: 1 pc



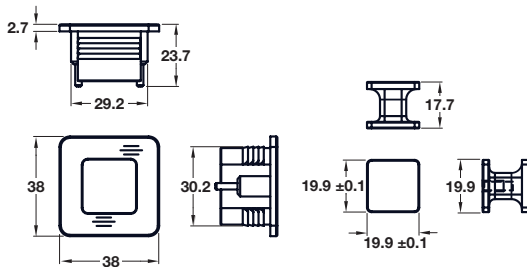
For use with push lock 211.60.200

Finish	Cat. No.
Chrome gloss	229.01.664
Chrome matt	229.01.464

Push knobs "Push In Plus"



- > Plastic
- > Order qty: 1 pc



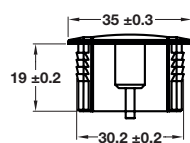
For use with push lock 211.60.200

Finish	Cat. No.
Chrome gloss	229.01.665
Stainless steel chrome	229.01.065
Chrome matt	229.01.765

Push knob frames



- > Plastic
- > Order qty: 1 pc



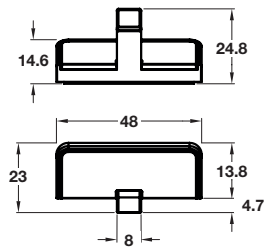
For use with push lock 211.60.201

Finish	Cat. No.
Chrome gloss	229.01.666
Stainless steel chrome	229.01.066

Hook in handle



- > Plastic
- > Order qty: 1 pc



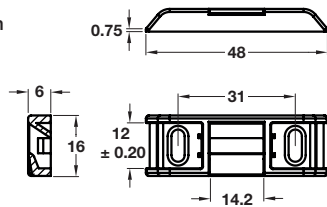
Finish	Cat. No.
Chrome gloss	229.01.663
Chrome matt	229.01.463

Latch



- > Plastic
- > Order qty: 1 pc

Photo shows hook in handle, available to order separately shown above 229.01.663/229.01.463



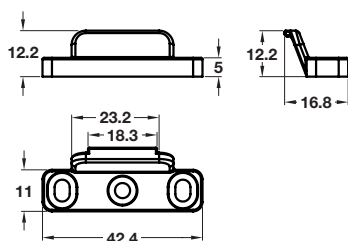
For use with Hook in handle 229.01.663 or 229.01.463

Finish	Cat. No.
Grey	239.41.591

Latch



- > ABS
- > Order qty: 1 pc



Finish	Cat. No.
Grey	239.41.590